

# PHG-1 被漆功率瓷管电阻器 Painted High Power Ceramic Tube Resistors

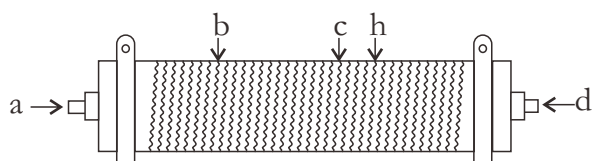


本体颜色: Body Color  
 标准品: Standard (Green 绿色)  
 标示: Marking  
 (根据客户要求提供相应标识)  
 (According to the customer request to provide corresponding identification)

## ● 特性 Feature

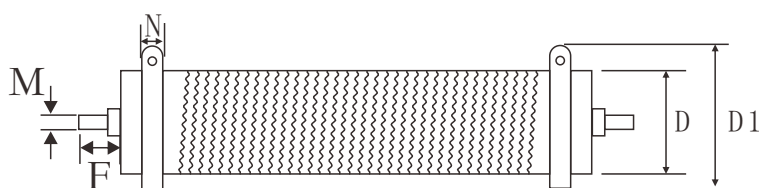
- I 产品选择表面立式波纹, 有利于散热、减小寄生电感, 耐大电流冲击。  
 The product surface with solid wave type, which will help to reduce the stray inductance and withstand high current surge.
- II 过负荷能力强, 热稳定性好, 使用寿命长。  
 Good overload and heat durability capacity, the useful time is longer than the others.
- III 精度范围:  $\pm 5\%$ 、 $\pm 10\%$   
 Resistance tolerance:  $\pm 5\%$ 、 $\pm 10\%$

## ● 结构图 Construction



ad	b	c	h
接线端子	环氧树脂绝缘层	合金丝	高铝瓷管
Terminal block	Epoxy resin insulating layer	Alloy wire	Alumina porcelain

## ● 规格尺寸 Dimensions



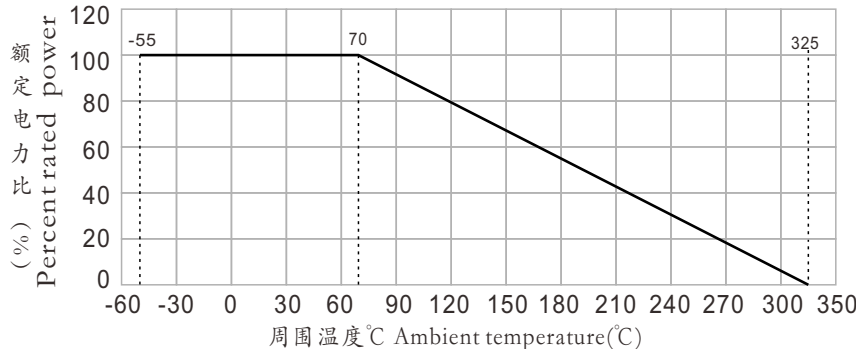
规格 Type	功率 Power	外形尺寸 Dimensions (mm)					
		$L \pm 2$	$D \pm 2$	$N \pm 2$	$D1 \pm 2$	$M \pm 1$	$F \pm 1$
PHG-1	1000W	620	60	12	80	12	30
PHG-1	2000W	620	70	12	90	12	30
PHG-1	3000W	620	80	20	100	12	30
PHG-1	3500W	720	100	20	120	16	30
PHG-1	4000W	720	100	20	120	16	30
PHG-1	5000W	720	100	20	120	16	30

## 参考规格 Reference Standards

JIS C 5201-1

## 额定温度下降曲线图 Derating Curve

例 Example



## 功率、阻值范围与耐电压 Power And Resistance etc

规格 Type	功率 Power (W)	阻值范围 Resistance Range (Ω)	误差值 Tolerance	温度系数 T.C.R PPM/°C	最高使用电压 Max Working Voltage (V)	最高负荷电压 Max Overload Voltage (V)	使用温度范围 Operating Temp. Range
PHG-1	1000W	0.5~500	J ± 5%	± 350	$\sqrt{P \cdot R}$	$\sqrt{10P \cdot R}$	-55°C ~ 325°C
PHG-1	2000W	0.5~500					
PHG-1	3000W	0.5~1000	K ± 10%				
PHG-1	3500W	0.5~1000					
PHG-1	4000W	0.5~1000					
PHG-1	5000W	0.5~1000					

## 性能 Performance

试验项目 Test Items	性能 Performance	试验方法 Test Methods (JIS C 5201-1)
温度系数 Temperature coefficient	± 350PPM/°C	在常温及常温+100°C时分别测量电阻并计算每度的阻值变化率。 Test resistance value at normal temperature and normal temperature added 100°C, calculate °C resistance value change rate.
短时间负荷 Short-time overload	$\Delta R \leq \pm (2\%R_0 + 0.05\Omega)$	施加10倍额定功率或最高负荷电压 (取较小者) 5秒。 According 10 times rated power to account the power or max. overload voltage (get the lower) for 5seconds.
耐焊接热 Resistance to soldering heat	$\Delta R \leq \pm (1\%R_0 + 0.05\Omega)$	在350 ± 10°C的锡炉中浸入2~3秒。 Immerge into the 350 ± 10°C tin stove for 2~3 seconds
可焊性 Solderability	焊锡面积覆盖率95%以上 Tth soldering area is over 98%	在245 ± 3°C的锡炉中浸入2~3秒。 Immerge into the 245 ± 3°C tin stove for 2~3 seconds
温度循环 Temperature cycle	$\Delta R \leq \pm (2\%R_0 + 0.05\Omega)$	在-55°C时放置30分钟,然后在+25°C时放置10~15分钟,然后在+155°C时放置30分钟,然后再在25°C时放置10~15分钟,共循环5次。 At-55°C for 30min, then at +25°C for 10~15min, then at +155°C for 30min, then at +25°C for 10~5, min, total 5cycles.
耐湿负荷寿命 Load life in humidity	$\Delta R \leq \pm (5\%R_0 + 0.1\Omega)$	在温度为40 ± 2°C, 相对湿度为90~95%的恒温恒湿箱中, 施加额定电压或最大工作电压 (取较小者) 共1000小时 (通1.5小时, 断0.5小时)。 Overload rated voltage or Max.working voltage (get the lower) for 1000hours (1.5hours on and half-hour off) at the 40 ± 2°C and 90~95% relative humidity.
耐湿负荷寿命 Load life in heat	$\Delta R \leq \pm (5\%R_0 + 0.05\Omega)$	在70 ± 2°C恒温恒湿箱中施加额定电压或最大工作电压 (取较小者) 共1000小时 (通1.5小时, 断0.5小时)。 Overload rated voltage or Max.working voltage (get the lower) for 1000hours (1.5hours on and half-hour off) at the 70 ± 2°C.
不燃性 Nonflammability	不可有明显火焰 No visible flame	分别按5、10、16倍额定功率加交流负荷5分钟。 Respectively load AC voltage by 5,10,16 times rated power for 5 minutes.

## ● 料号编号 ordering Information

例 example

PHG-1	3000	J	10R00
产品名称 Product Name	功率 Power	精度 Tol	阻值 Ohm
被漆功率瓷管电阻器 Painted High Power Ceramic Tube Resistors	1000=1000W 3500=3500W ..... 5000=5000W	J=±5% K=±10%	0R100=0.1Ω 0R200=0.22Ω 10R00=10Ω 10K00=10KΩ